

# COSMOGENESIS

A photograph of a rocky coastline at sunset or sunrise. The sky is a mix of light blue and pink. The foreground is filled with large, dark, jagged rock formations. The ocean is visible in the background, with a small, white, rocky island or headland in the distance.

Lee Hunter  
John Michael Arts Center  
Sheboygan, WI  
January-August 2022

[leehunterartstudio@gmail.com](mailto:leehunterartstudio@gmail.com)  
[www.leehunter.net](http://www.leehunter.net)





photo credit: Lee Hunter: Cosmogenesis, John Michael Kohler Art Center, 2022



## Project Description

Set in the near future, Cosmogenesis is an ongoing world-building project from the perspective of an archivist sorting through the ephemera and material culture of legendary twenty-first century Transdimensional Travel Groups (TTGs). The archive comprises photographs, videos, sculptures, and found objects, each part of coded systems that reveal secret methods of travel through parallel universes. The final form of Cosmogenesis will be an encyclopedic coffee table book, documenting the research, writing, exhibitions, and programming associated with the various iterations of this durational project.

I am committed to an intersectional, trans-feminist future. I rely on the visual aesthetic of beauty in my work with a hint of the uncanny or the strangely familiar. For the audience that wants to engage beyond the beautiful surface, this project is about nature, belief systems, rituals, cosmology, and time.

The following images are from an iteration Cosmogenesis commissioned by John Michael Kohler Art Center, Sheboygan, WI. The exhibition was curated and organized by Senior Curator, Kaytie Johnson, and ran from January 2022-August 2022 in the Small Works Gallery.



Red Map 00002-A; Portal Entrance to E04556, 2020, Ceramic, 18.75 x 15.5 x 1.5 inches





photo credit: Lee Hunter: Cosmogogenesis, John Michael Kohler Art Center, 2022

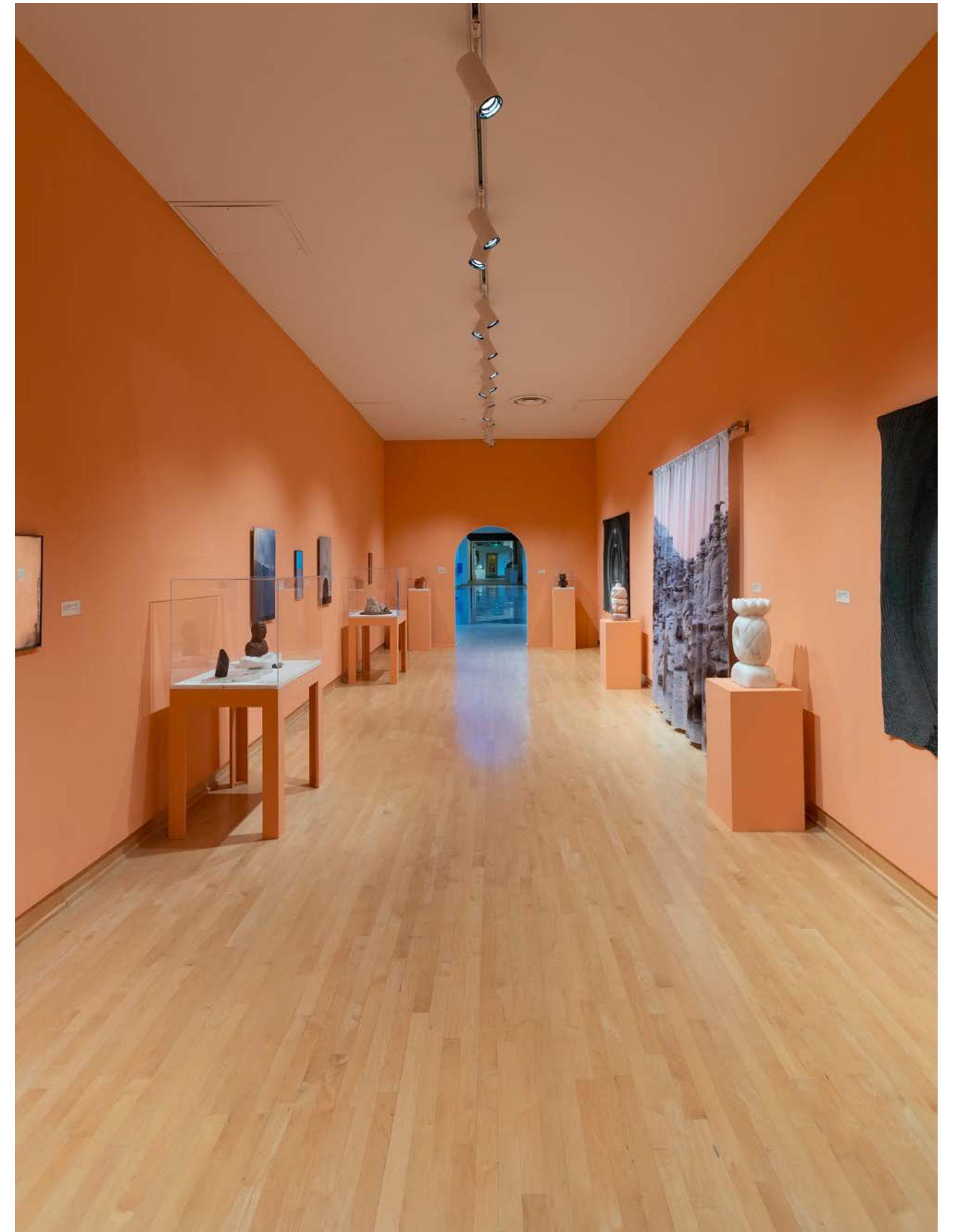


photo credit: Lee Hunter: Cosmogogenesis, John Michael Kohler Art Center, 2022





Portal Exit to E04556; In use for 9,000 years, 2021/2022, Photo mural, 8 ft x 16 ft  
photo credit: Lee Hunter: Cosmogenesis, John Michael Kohler Art Center, 2022





photo credit: Lee Hunter: Cosmogogenesis, John Michael Kohler Art Center, 2022





Portable Portal #1; Four people required for use; Whittier Tunnel; E00032, 2021, Jacquard weaving on hand-pieced and quilted fabric, 58 x 78 x .25 inches



Portable Portal, folded.





Walrus Deity; Popular in E00178; Found in the Temple of Light; Artifact from E00178, 2021, Colorado alabaster, 20 x 7.5 x 7 inches





The Devil's Playground at Dawn; Near the portal in E00085; Popular Mining Parallel, 2020/2021, custom printed fabric, thread, 9.5 ft x 8 ft.



Detail of the photograph.





Porch Statue (after pineapple); Opens Fluid Portal; Temple of Light Collection; E00032, 2022, Italian alabaster, 20 x 10 x 7 inches





photo credit: Lee Hunter: Cosmogenesis, John Michael Kohler Art Center, 2022





Fertility Goddess (rabbit/squid); Ritual use unknown; OTO Revival Travel Group, E00032, 2021, alabaster, obsidian, acrylic, 8 x 11 x 7.5 inches



Back View





Side View



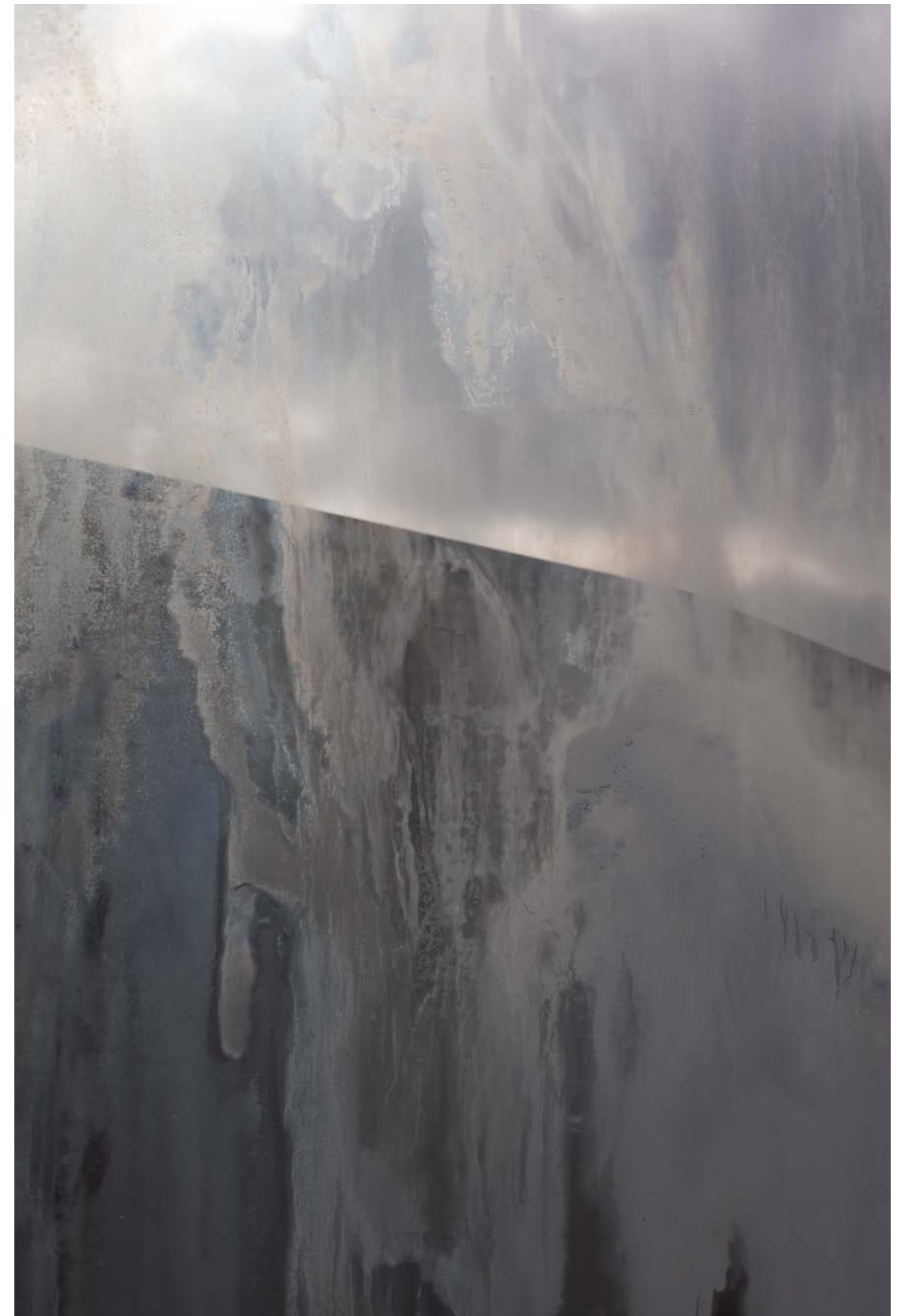
Back View

Stone Ghost; Rejuvenation Spring near the beach; Atlantic Side of North America; E00178; 2021, alabaster, sandstone, volcanic rock, fossil, and wood, 9.5 x 17 x 11 inches





Midwest Portal; Activate with Nook; Central Illinois (Witch House); E00032, 2021, inkjet print & acrylic facemount, 30 x 20 inches.

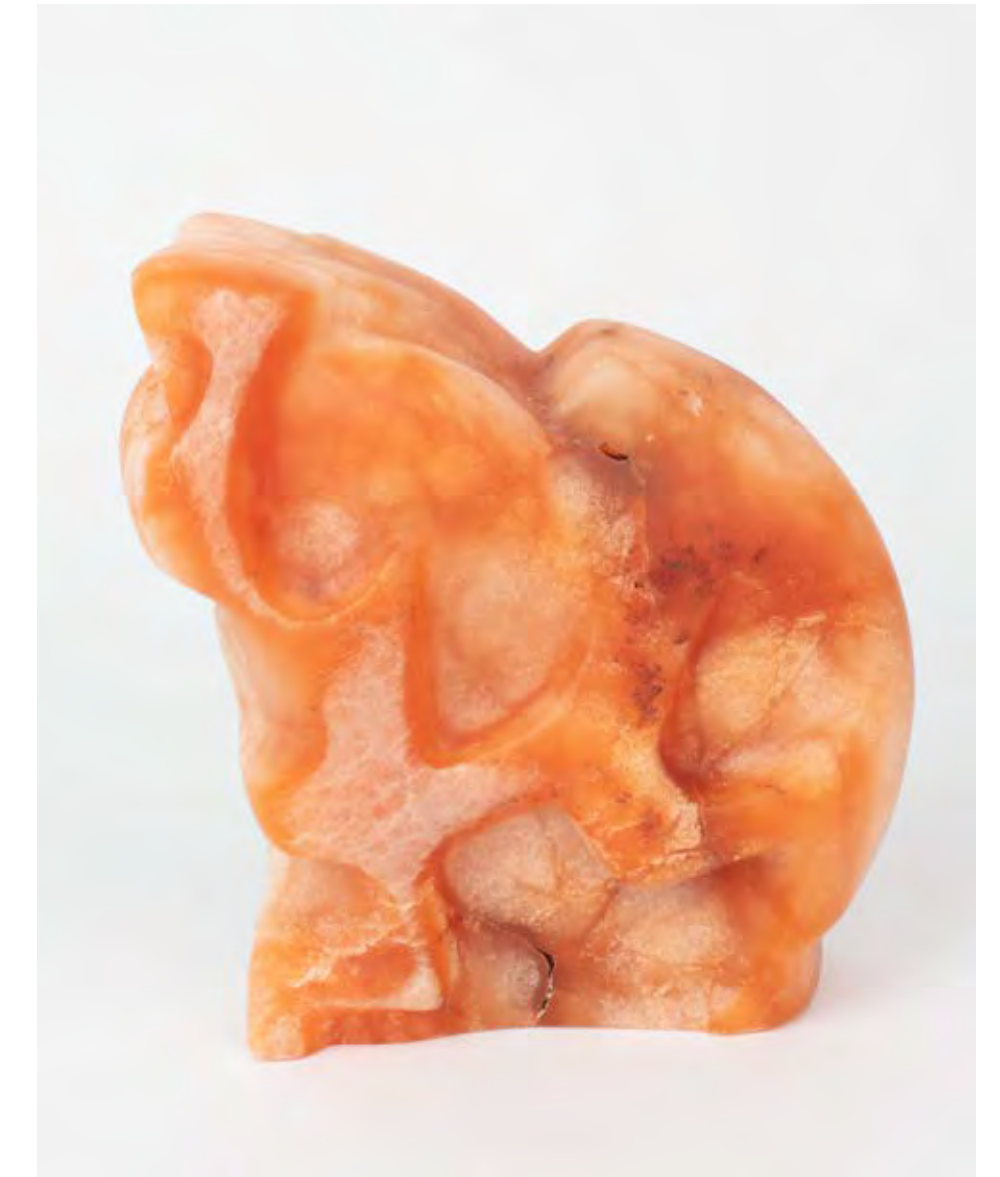


Environmental Bleed; travel formations; E08339, 2019/2021, inkjet print & acrylic facemount, 30 x 20 inches.





Cat Figurine; For Good Luck; Found in Temple of Light Collection; E00032; 2021, ceramic, acrylic paint, beeswax, 9.75 x 7.5 x 6 inches



Dragon Key; Thought to Open Portal Near Santa Fe; Found in Cas O'Brien's personal items; E00032, alabaster, 9 x 8 x 3.75 inches





Side View



Detail of Cicada Wings

Memory Stones; Used to access E00178; Personal collection of Eris Rose Johnson, 2021, carved soapstone, selenite slab, agate, cicada wings, 7 x 16 x 11.5 inches





Look for Leo, Find the stairs (left and right); Meeting Location; E00032, 2019/2021, inkjet print & acrylic facemount; 30 x 20 inches





Portal in Basement; Look for Murals; From Training Manual, 2019/2021, inkjet print & acrylic facemount, 30 x 20 inches



Install View with personal items in case.





Oracle Deck; Gift from Eris Rose Johnson; Used for predicting auspicious dates for travel; E00032, 2022, Deck is 1 x 5 x 3.5 inches, Paper, Colored Pencil, Acrylic, Leather Carrying Case



Travel Sigil; Traded between TTGs; E00032, 2022, Pewter, .25 x 4 x 4.25 inches





Key for Use During Lunar Eclipse; Access to E00178, 2020, Soapstone, 2.75 x 4.25 x 1.5 in



L: Talisman; Acolyte Level 2; Temple of Light, 2022, Pewter, .25 x 2.5 x 1.25 inches  
 C: Talisman; Acolyte Level 1; Temple of Light, 2022, Pewter, .25 x 2.5 x 1.25 inches  
 R: Talisman; Acolyte Level 3; Temple of Light, 2022, Pewter, .25 x 2.5 x 1.25 inches



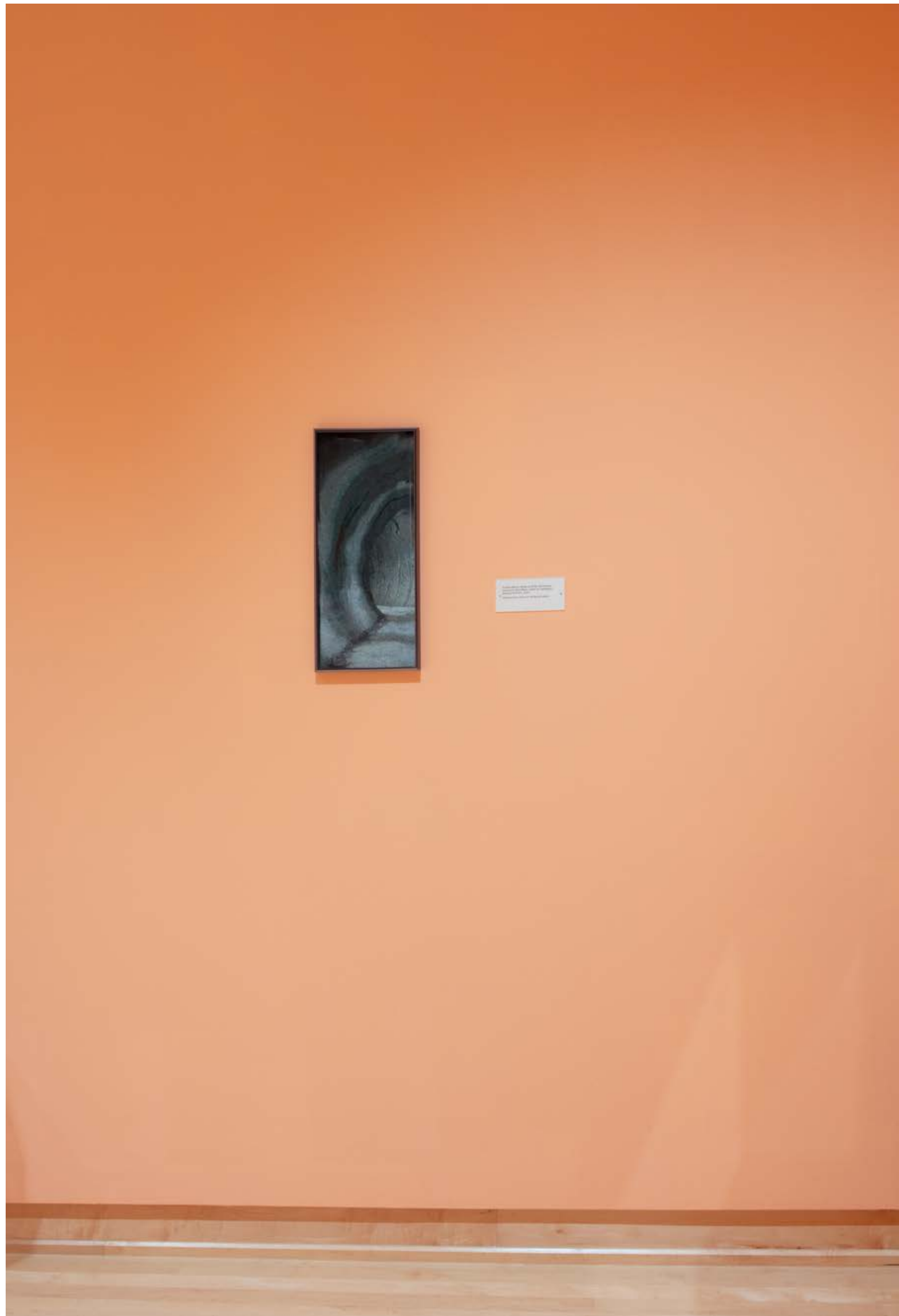


Personal Items:  
L: Fossilized Mud Hole  
R: Altar Stones; Use Unknown; E00032, 2021, Chert, Eggshell, Rock, Ceramic, 2.5 x 4 x 4 inches



Personal Items:  
L: Small Ritual Vessels; Used in New Moon Ceremony; E00032, 2021, Ceramic, Juniper Sap, Tea Leaves, 2.5 x 6 x 6 inches  
R: Altar Vessel #2, 2021, Stone, Pewter, Ceramic, 1.5 x 5 x 5 inches





Acolyte Mirrors; Made by Elder Alchemists during the Wolf Moon; Used for meditation training; E00032, 2022, Hand poured mirrors on reclaimed glass, 18 x 7 inches



Mountain Spirit; Attributed to Lapis angui or Stone Snake group; E00032, 2021, ceramic, stone, and wood, 30 x 26 x 18.5 inches with Acolyte Mirror (Above).





Mountain Spirit; Attributed to Lapis angui or Stone Snake group; E00032, 2021, ceramic, stone, and wood, 30 x 26 x 18.5 inches



Back Side



# Glossary:

## The Archivist

Tima Noda (b. April 21, 2222 d. December 18, 2325) is the head archivist at the Library of Congress at the special collection focused on Trans-Dimensional Travel Groups that were active between 2030-2165. Noda has been pivotal in developing the historical context for the archive, as well as managing and cataloging the collection. All descriptions and titles are from her research.

## The Adventurer

Cas O’Brian (b. May 29th, 2099 d. November 7, 2142) was an active member of the Temple of Light, Pittsburgh branch and was trained by Eris Rose Johnson to travel parallel dimensions. O’Brian was a legendary smuggler and was killed during a mission to find a large amount of Rose Gold for a Quintessence Ceremony to save a friend of the High Priestess of The Temple of Light, Chicago.

## The High Priestess

Eris Rose Johnson (b. December 11, 2063 d. March 2, 2159) was born into the Temple of Light, her parents were founding members and she was trained to travel parallels at an early age. She studied anthropology and collected ethnographic accounts of many of the parallels she visited. At twenty-five she was named High Priestess of the Temple, many of the items in this collection come from the Temple she led.

## Temple of Light

The Temple of Light is one of the original Transdimensional Travel Groups, started around 2025 by a group of seekers, inspired by quantum physics and the multiverse, that wanted to find a way to travel parallel dimensions. They found that a focused practice of lucid dreaming and meditation combined with portals, keys, and maps, that they were able not only to dream new the parallels, but to move through them. The seekers were interested in ancient mystery cults, alchemical practices, and the history of religion. The temple name is a reference to a Roman mystery religion dedicated to Mithras, a god that was born from rock.

## Transdimensional Travel Groups

Transmorphic Travel Groups (TTG) that were active from approximately 2030-2160. The TTG’s had a variety of different cosmologies and beliefs about nature, as well as methods for travelling the multiverse. The groups often collected ethnographic information and geological surveys and developed informal networks of trade as they traveled through dimensions.

## Portals

The TTG’s use a variety of different portals to access parallel dimensions. Many of the portals were recorded by photograph, in the form of abstracted architecture photos. The photos were abstracted to give a visual reference, but not an actual location, due to the secretive nature of the TTGs. From some of the oral history accounts, there were many more portals that were known and shared between various groups.

## Keys

Keys are an important part of parallel travel for several of the TTGs. Keys are made of many different materials and are usually fist sized, but sometime larger. The keys are used to activate portals for physically moving through the portals. Different keys are used for different portals and dimensions.